

WHAT DO I NEED TO KNOW ABOUT

THE COVID VACCINES

WHAT VACCINES ARE AVAILABLE IN SAN ANTONIO?

Pfizer. Approved for ages 16 and older

Moderna. Approved for ages 18 and older

Pfizer and **Moderna** are both messenger RNA, or mRNA, vaccines. The mRNA teaches our immune cells how to make a protein that will trigger an immune response to the virus. It uses our body's natural immune defenses without providing any live virus or interacting with our DNA!

ARE THE VACCINES SAFE?

YES! They are safe and effective. Before the vaccines were publicly available, they were tested for safety in tens of thousands of clinical trial participants. Additionally, safety monitoring is underway for the millions of people who have received the vaccine since December. Scan the QR code for more safety information!



WHEN AND WHERE CAN I GET THE VACCINE?

The state of Texas is currently vaccinating people who fall into the 1a and 1b category. Their current estimate for widespread availability is Spring 2021.

There are multiple locations throughout the city, Scan the code for detailed information. Appointments are required, so make sure to check the website or call the vaccination location before going!



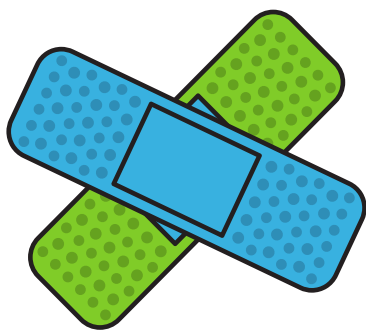
WHAT ABOUT CHILDREN?

Children ages 16 and older with a chronic health condition are currently eligible to receive the **Pfizer** vaccine. Clinical trials are underway for children as young as 12 years old with **Pfizer** and **Moderna**. More clinical trials are expected for children with other vaccine manufactures following their adult trials. Additionally, trials involving children ages 6-12 are expected after determining safety trends for children ages 12-18.



WHAT ARE THE SIDE EFFECTS?

The most common side effects are pain and/or swelling at the injection site, fever, chills, tiredness, and headache. It is important to know that these symptoms do not represent Covid infection, as the vaccines do not contain the live virus and are not capable of causing the disease. These side effects represent the your immune system activating and learning how to fight a covid infection in the future!



I GOT THE VACCINE! NOW WHAT?

You will return for your second dose for **Pfizer** in 21 days for **Moderna** 28 days. It is important that you continue to wear your mask, stay 6ft from others when possible, avoid large gatherings, and wash your hands even after your vaccination! The real-world effects of the Covid vaccines are still being studied, and we want to continue practicing all of the prevention tools we have been using since March. Additionally, make sure to sign up for V-Safe, the CDC's after vaccination health checker!



IF YOU HAVE SPECIFIC CONCERNS REGARDING VACCINATION FOR YOURSELF OR YOUR CHILD, PLEASE REACH OUT TO YOUR PRIMARY CARE PROVIDER FOR ADVICE.

FOR MORE INFORMATION ON COVID, VACCINES, OR TEXAS' VACCINE ROLLOUT, PLEASE VISIT THE FOLLOWING WEBSITES:

Texas Department of State Health Services <https://dshs.texas.gov/>

Center for Disease Control and Prevention <https://www.cdc.gov/coronavirus/2019-nCoV/index.html>